

*Pennsylvania
Conference
for Women*



NOVEMBER 7
PHILADELPHIA

Exhibitor Information

Updated 9/15/24

Conference:
November 7th 8am-5pm

Pennsylvania Convention Center
Hall C
1101 Arch Street
Philadelphia, PA 19107

Questions? Email us
exhibitors@paconferenceforwomen.org

General Information

Move in:

November 6th 10:00am - 5:00pm

(Sponsors can start setting up at 8am)

- All booths should be show ready on the 6th. Minimal handheld items can be brought in with you on show day.
- Check in at EXHIBITOR CHECK IN DESK by 3:00pm. Desk will be located in Hall C near the dock doors in the back of the hall.
- Children under 16 are not allowed in the exhibit hall during set up, tear down or during show hours.

Show times:

November 7th 8:00am – 5:00pm ET

Staffing hours:

- Exhibitors can access the floor starting at 7:00am on 11/6
- Booth **MUST** be staffed from 7:45am – 5pm. Reminder that you will go through security on show day, so arrive to the convention center early.
- Exhibit hall will be slow during general session from 10:15-1:15, but the hall will not close. See full agenda here:
<https://www.paconferenceforwomen.org/conference/agenda/>
(website will be updated soon)

Move out:

November 7th 5:30pm – 7:00pm

DO NOT TEAR DOWN EARLY

General Information (*con't*)

Exhibit Hall Passes:

- Each 10'x10' booth comes with up to (3) exhibit hall only passes. These are for your workers to staff your booth and do **NOT** give access to sessions.
- Names are **NOT** needed in advance, you will simply pick up the passes when you check in on 11/6.
- During check-in you can also decide to leave badge(s) for your workers to pick up on show day. Simply send them to the **HELP DESK** located outside Hall A in the "registration bridge" on the 2nd level.

Security:

Overnight security will be provided in the hall, but all items left overnight are at the discretion of the exhibitor. Items of value can be left in boxes under tables or in the provided storage space behind the booth.

Inclusions / Exclusions

Your 10'x10' booth space is set up in standard exhibitor aisles (unlike last year).

Your booth space includes:

- (1) 6' table draped in black spandex
- (2) chairs
- 10'x10' space
- 8' black back drape and 3' side drape
- ID sign (small sign with your company name)
- Up to (3) EXHIBIT HALL ONLY badges to work the booth.
We do NOT need the names in advance – just pick up what you need on set up day.

Your booth space does NOT include:

- Flooring
- Electrical
- Internet
- Any additional furniture or signage
- Conference passes to the event itself
- Food

Move in & Set up:

November 6th 10:00am-5:00pm

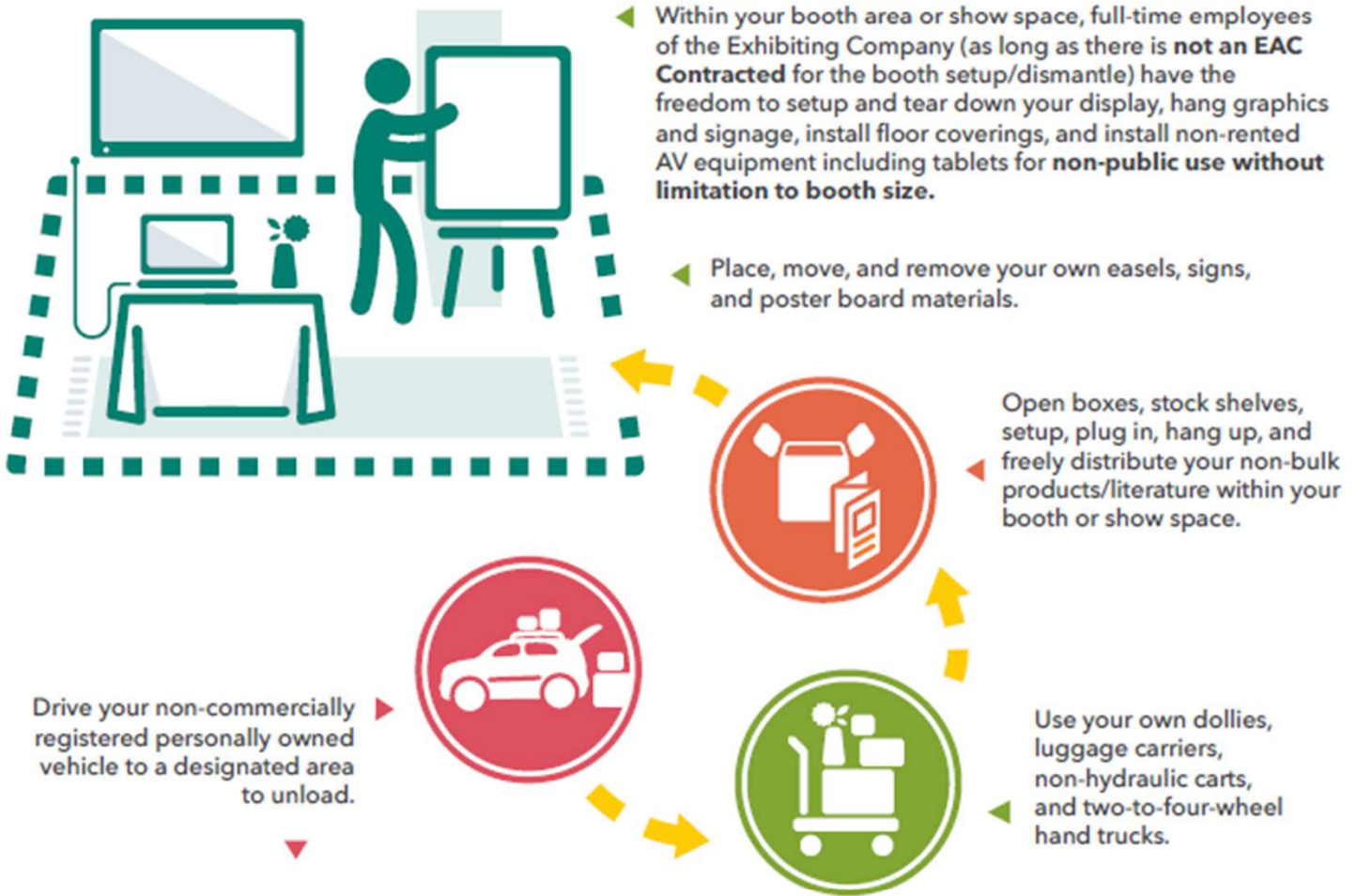
- Arrive before 3pm on set up day, or you may be considered a no-show. During check in you will be given final instructions, your booth location and your badges.
- When you arrive, you CAN unload your own vehicle at the dock as long as it is done by **FULL TIME EMPLOYEES** of your company and you arrive in a private vehicle with **NO MARKINGS**. Rented vans, trucks and trailers are **NOT** considered a private vehicle and you will be subject to union labor rules for unloading.
- You will be given 15 minutes to unload and then you will be required to move your vehicle. It's best if you have one person to stay with the booth, while the other parks. You may unload your own materials with your own non-mechanized dolly or cart. There are **NO** carts available to rent or borrow.
If you wish to use the main entrance, you may hand-carry items into the building, without the use of dollies or carts.
- Smaller exhibitors can take advantage of the Cart services offered by AEX. They will unload your car and bring your items to your booth on a cart. You must arrive in a private vehicle and all items must fit on the cart. See AEX kit for more information. The kit will be emailed to you in late July.
- If you arrive in a box truck, rental truck or commercial vehicle you **must** use AEX's union labor to unload and there will be a charge calculated on the material handling fees. See AEX online kit for pricing.

Move in & Set up continued

- Bring photo ID with you, you might be asked by the convention center when driving to the docks.
- **Directions to the dock:**
When accessing the docks use the Vine Street Ramp located between 11th & 12th Streets off Vine. Use the docks for Hall C.
- **Parking information:** There is a fee for parking on set up day and show day.
- **Empty boxes** that you need for move out *can* be stored with AEX. **HOWEVER**, it often takes time to return those boxes. It's best if you bring them back to your vehicle or store them in your booth. The service is free **IF** you used AEX to unload your vehicle, otherwise there is a fee.
- You can hang your own signage from the pipe and banner behind your booth. 2 "S" hooks will be provided with your ID sign that you can reuse. If you need more please purchase them prior to arriving. If you plan to hang your sign yourself bring a small step or step ladder to use – there will be **none** available onsite to use.
- Helium balloons, tents, food or beverage distribution, confetti, glitter and open flame are strictly prohibited. You can have a small jar of pre-wrapped candies on your table, if you wish.
- Food is **NOT** included with the booth. You can bring your own, purchase items at the concession stand, or take breaks with colleagues to go out for lunch.

PENNSYLVANIA CONVENTION CENTER ENHANCED EXHIBITOR WORK RULES

Progressive work rules and streamlined services provide our customers with just the right amount of flexibility and independence they need, resulting in greater cost efficiencies and a better overall customer experience.



VEHICLES THAT QUALIFY:

			
SEDAN	SUV	PICKUP	VAN

VEHICLES THAT DO NOT QUALIFY:

			
TRAILER	RENTALS	BOBTAIL	STAKEBED

Use your own power tools and ladders (up to 6 feet) to setup and tear down exhibits.



Electric, Internet, Union Labor and Rental Orders

Electric, internet, union labor and additional furniture are NOT included with your booth, but you can order them if you wish.

Electric and Internet are ordered with the convention center. You will
Electric: can be purchased online here:

<https://pcc.ungerboeck.com/prod/app85.cshtml?AppCode=COE&C=1&OrgCode=10>

Discount pricing is available until October 15th.

Internet: There is **NO internet in the hall**. Please bring your own hotspot or plan accordingly. You can purchase internet from the center, but it's wired and starts at \$1,000. There is no wireless internet for purchase. Most exhibitors who need internet for processing credit cards do it through their phone service.

Furniture rental and union labor can be ordered with AEX online. The full kit can be found online here, AEX will be sending you an email directly with instructions on how to order online:

<https://www.paconferenceforwomen.org/wp-content/uploads/sites/2/2024/05/PA-Conference-for-Women-Exhibitor-Kit-11-24.pdf>

Additional furniture is expensive to rent. You can bring your own to cut down on those expenses.

Shipping: Shipping items to the warehouse, or onsite will result in "material handling" charges that can be VERY expensive. It is best to bring the items yourself and unload your vehicle yourself. If that is not possible, contact us ASAP for more information. See the AEX online kit for more information.